

# summer school st. benet's hall

Residential: Girls Only – 12-15 years

Churchill House Oxford is situated in St Benet's Hall, founded in 1897 so that monks of Ampleforth Abbey could take degrees at Oxford University. In today's world it is principally a Hall of Studies for Oxford University students. St Benet's Hall is a handsome Georgian house which has recently been refurbished and redecorated, maintaining its fine Georgian dignity. This beautiful centre is situated in an 'oasis' of calm in the centre of historic Oxford. It provides the perfect setting for a girl's only vacation course ensuring the very best of everything – location, accommodation, teaching, activities. It allows students the opportunity to soak up the English way of life.



## FACILITIES

- Very good standard of residential accommodation
- Single, twin and some multi-bedded rooms
- Student common room
- Historic library
- Well equipped classrooms
- Beautiful dining room
- Chapel with 18th century monastic organ



## LOCATION

Oxford is a beautiful university city in the south of England, and is about 60 miles from London and very close to several major airports (only 40 miles to Heathrow). It is a small and safe city with a population of approximately 120,000. Oxford is famous as one of the oldest university cities in the world and the college buildings create a unique and beautiful atmosphere. But Oxford isn't only a centre of study; it's also a beautiful city of parks, open spaces and rivers, and offers a lively social life: there is always plenty to see and do. And because Oxford is so central, you are never too far from other interesting places: London, Stratford upon Avon, Stonehenge, Bath, Brighton and the Cotswold countryside are all less than 2 hours away.



## SUMMER VACATION COURSES

[www.sprachenmarkt.de](http://www.sprachenmarkt.de), [service@sprachenmarkt.de](mailto:service@sprachenmarkt.de), Tel: +49 711-45 10 17 370

# summer school



View over Oxford colleges



## AND MORE

In addition to attending 15 hours English Language lessons per week (20 lessons), young learners at St Benet's Hall will have an additional 4 hours intensive English Language lessons each week and three cultural afternoon activities.

## EXCURSIONS:

- Oxford University
- Natural History Museum
- Punting on the river
- London
- Cambridge
- Windsor and Eton
- Bath & Stonehenge
- Cotswolds
- Blenheim Palace
- Warwick
- Stratford

## ACTIVITIES:

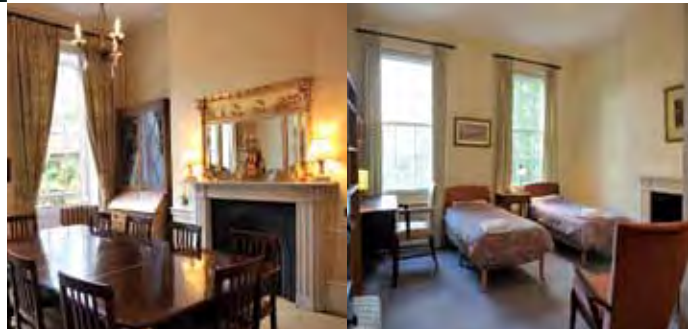
- Photography
- Craft
- Nature walks
- Jewellery making
- Shopping
- Orienteering
- Landscape painting
- Drama
- Swimming
- Yoga
- Volleyball
- Tennis
- Haiku poetry workshop
- fashion classes

## FOOD

All meals are provided by the college in their Refectory. St Benet's Hall retains the ancient practice of a common table for meals. The Refectory (itself an ancient monastic term to describe the dining hall) contains one long table spanning the length of the Hall. Up to fifty can dine together and enjoy the healthy food and unique atmosphere. All dietary needs can be catered for including vegetarian and halal.

## ACCOMMODATION

St Benet's Hall offers accommodation in single, twin and multi-bedded rooms. We encourage students to mix with other nationalities in shared rooms and for younger students coming alone the multi-bedded rooms are the best way to make friends and have fun. Most of the bedrooms have ensuite or adjacent facilities and all rooms have spectacular views over Oxford and beyond. But most important, St Benet's Hall is renowned for its welcoming atmosphere and excellent cuisine. Children are supervised at all times.



CHURCHILL HOUSE

Churchill House, Spencer Square, Ramsgate,  
Kent, England CT11 9EQ