

SIR CHR



Ridley Hall College, Cambridge

LOCATION

Ridley Hall College, Cambridge

CLASSES

15 hours per week

CAPACITY

200 students at one time

AGE RANGE

16 - 19 year olds

WHY CHOOSE SIR CHRISTOPHER?

- Excellent location in city centre
- Good accommodation on or near campus
- More independence for older students
- Impressive campus with central lawn

FACILITIES

- Lovely enclosed gardens
 - Large central lawn for activities
 - High level of safety and security
 - Dining room
 - Lecture hall
 - Student lounge
 - Activities office
 - Accommodation and welfare office
 - Indoor and outdoor sports facilities
- 5 - 20 minutes' walk away



THE COLLEGE

Ridley Hall College, established in 1881, is an independent college affiliated with Cambridge University.

It looks and feels like the perfect Cambridge campus: the traditional buildings and impressive dining hall surround a beautiful green lawn and private gardens.

It is ideally located in the centre of Cambridge, just 5 minutes' walk to all the main attractions of this wonderful city. The traditional atmosphere of Ridley Hall and its central location in Cambridge make the Sir Christopher Programme the perfect choice for older students, aged 16 - 19 years.

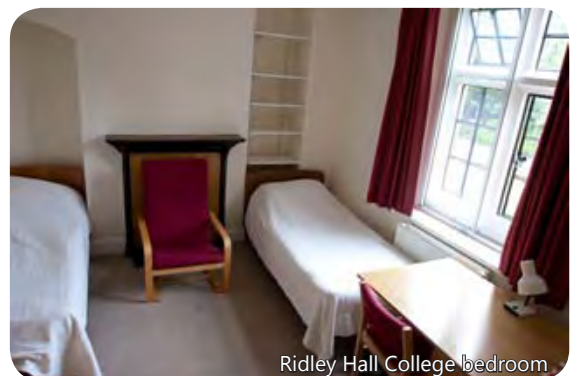
Studio Cambridge has taught at Ridley Hall every summer for the past 47 years. The Sir Christopher Programme has an international reputation and is one of our most popular programmes.



Ridley Hall's private gardens



Newnham College residences



Ridley Hall College bedroom

ISTOPHER



Making new friends

LESSONS

- 15 hours (20 lessons) of English language instruction each week
- International classes
- Classes at all levels
- All books and educational materials
- Certificate of studies

ACCOMMODATION AND MEALS

Accommodation is on-campus at Ridley Hall and off-campus at other student residences. Homestays are not available.

Accommodation comprises:

- A single bedroom or a bedroom shared by 2 or more students of the same sex and similar age
- A shared bathroom
- All meals
- Free laundry facilities (you must do your own washing, but at no charge)
- A change of bed linen once per week

ACTIVITIES

The full programme includes:

- Four morning or afternoon activities each week
- Activities every evening
- One full-day excursion each week

Activities will be held either on campus or at sports facilities around a 15 or 20 minute walk from campus. Activities also include visits to sights and events in Cambridge, only 5 minutes' walk away.

One full-day excursion per week



COURSE DATES 2012

	2 weeks	3 weeks	4 weeks	5 weeks	6 weeks	7 weeks	8 weeks
Start date	End	End	End	End	End	End	End
July 1	July 15	July 22	July 29	August 5	August 12	August 19	August 26
July 15	July 29	August 5	August 12	August 19	August 26		
July 22	August 5	August 12	August 19	August 26			
July 29	August 12	August 19	August 26				
August 5	August 19	August 26					
August 12	August 26						



In the Ridley Hall College grounds



Good meals in a college atmosphere



Learning new skills