



Bell
EST 1955

Spring Explorer

Bell Berkshire College

27 MARCH - 30 APRIL 2022

1 - 5 WEEKS



Spring Explorer

Minimum staff to student ratio

1:6 

Course summary

Age	11-17
Min. language level	All levels
Course length	1 - 5 weeks
Location	Bell Berkshire College
Start dates	Sunday 27 March Sunday 3 April Sunday 10 April Sunday 17 April Sunday 24 April
Course fees	£930 per week

Course components 1 week



Educational activities

Students choose 2 electives per week. Sample electives include:

- Art and crafts
- Volleyball
- British literature
- Football
- Cricket
- Health and fitness
- Dance
- Handball
- Dodgeball
- Journalism
- Drama
- Music
- Film & photography
- Orienteering

Overview

Our Spring Explorer course gives students the opportunity to discover British culture while developing their English language skills, through project-based learning activities and interactive learning - both inside and outside the classroom.

On this course, students will:

- ▶ Develop their English in all four areas: reading, writing, listening and speaking
- ▶ Practise new vocabulary, pronunciation and improve their grammar structures, as appropriate to their level
- ▶ Become confident, independent learners with essential 21st century life skills like: communication, critical thinking, collaboration, creativity and cultural awareness
- ▶ Make friends with students from a diverse mix of countries across the globe

Who is this for?

Young learners who want to combine English language study with activities and educational day trips and excursions.

Our approach

English lessons

English lessons include projects that are designed around the school's weekly theme. Small groups of students work together on their projects based on the language knowledge and skills development needs.

Activity programme

Students at Bell 'learn by doing', so the activity programme is an integral part of the course and allows young learners to practise and develop what they have learnt in lessons. Our afternoon activities - electives and Academy options - are designed to improve communication and confidence while developing academic, creative and active skills.

All Spring Explorer students will also enjoy a wide variety of whole-school activities, such as games, competitions, discos and shows.

Study Tours

Students take part in one full-day study tour per week to a London-based venue, with a walking tour of the sites and time for shopping. Students staying longer than one week will also have a weekend excursion.

Students have the opportunity to add optional activities to enhance their experience, available on certain weeks only (see page 8 for more details)

- ▶ **Warwick** - explore the grounds of the medieval Warwick castle and wander through the historic streets of the town centre
- ▶ **Cambridge or Oxford** - tour the city and university colleges, try punting along the river or visit one of the many world-class museums
- ▶ **London** - see the London Eye, British Museum, Westminster Abbey, Natural History Museum, Science Museum or the Houses of Parliament
- ▶ **Stratford upon-Avon** - visit the home of Shakespeare and see the beautifully restored Elizabethan houses. Students can take a bus or boat tour to see all the sights of one of England's prettiest towns

Sample Timetable

	SUNDAY	MONDAY	TUESDAY	WEDNESDAY	THURSDAY	FRIDAY	SATURDAY
08.00		BREAKFAST FOLLOWED BY MORNING MEETING					
09.00	Student arrivals and welcome activities	Language test / Language lesson	Language lesson	Full day study tour LONDON London Eye Walking tour Shopping	Language lesson	Language lesson	Departures or full day excursion OXFORD Christ Church College Walking tour Shopping
10.30		BREAK			BREAK		
11.00		Orientation / Language lesson	Language lesson		Language lesson	Language lesson	
12.30		LUNCH			LUNCH		
13.30		Activities	Activities		Activities	Activities	
15.00		BREAK			BREAK		
15.30		Language lesson	Activities		Activities	Course presentation	
17.00		HOUSE TIME			HOUSE TIME		
18.00	DINNER AND FREE TIME						
19.30	Evening activities						
21.00	HOUSE MEETINGS						

Project-based learning

Explore the themes and topics

Project themes have been intentionally designed for students and teachers to take their project in a direction that best meets the group's needs and motivations.

This means that every group of students will learn something different with each student receiving a personalised learning experience. This unique aspect of our Explorer courses ensures they are consistently motivating and engaging, and students often return year after year.

Develop language skills

The content of lessons, study tours and activities are designed with a focus on the project theme, giving the students a holistic experience which accelerates their learning.

Create a personal response

Each project has a theme which begins with a central guiding question to start the students on their learning journey. This guiding question focuses the project and the students work collaboratively towards the production of a tangible project outcome which often combines each of the different aspects of the course.

Practise everywhere

Project-based learning on an Explorer programme is a fully-integrated approach to language learning that provides our students with lots of cross-curricular opportunities for learning everywhere, both inside and outside the classroom.

Present at the end-of-course show

The end of the Explorer project gives students the chance to share their learning experiences with each other in the form of a course show (presentation).



Course includes:



Tuition, study materials and course portfolio



Comprehensive supervision by qualified staff



Free internet access



Residential accommodation and all meals



Transfers to and from designated airports/stations on scheduled arrival and departure days *



Free laundry service



A full programme of educational and social activities

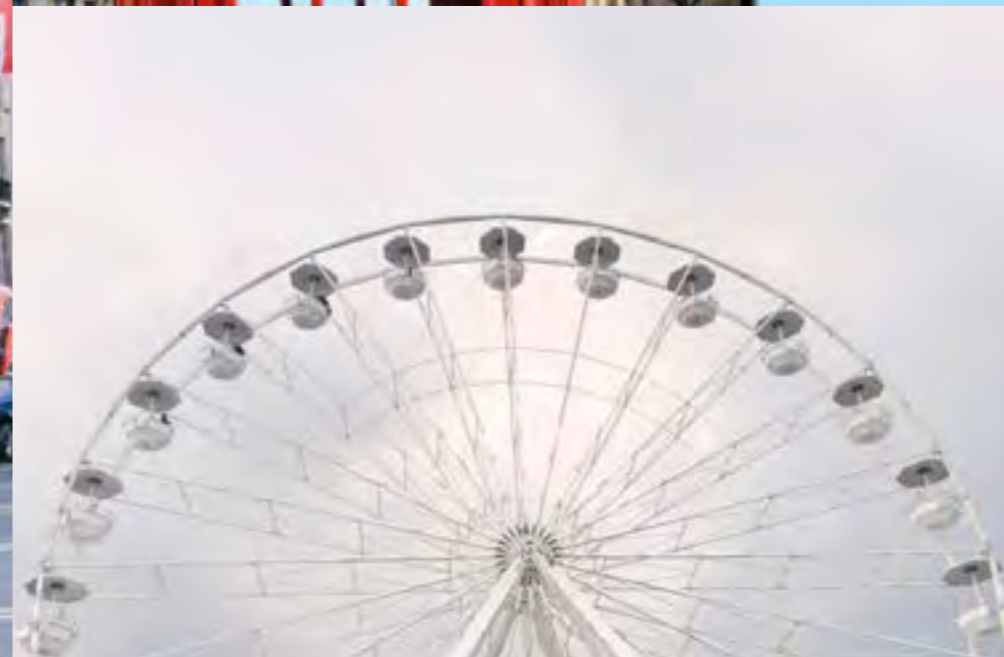
* For arrival and departures between 10am and 8pm or advised train times



Comprehensive insurance



A full programme of study tours



WEEK 1: London life

SUNDAY 27 MARCH – SATURDAY 2 APRIL




Celebrate British culture in the world's most iconic city and learn how life has changed across its history.

How different is life in London to life in your hometown?

Example learning outcomes

- ✔ Gain key vocabulary such as adjectives for describing traits and qualities of different people and places
- ✔ Learn comparative and superlative forms for comparing the differences in lifestyle in London from their home countries
- ✔ Develop your cross-cultural understanding and communication skills

Topics may include:

-  Social Studies
-  Geography
-  History

Types of activities could include:

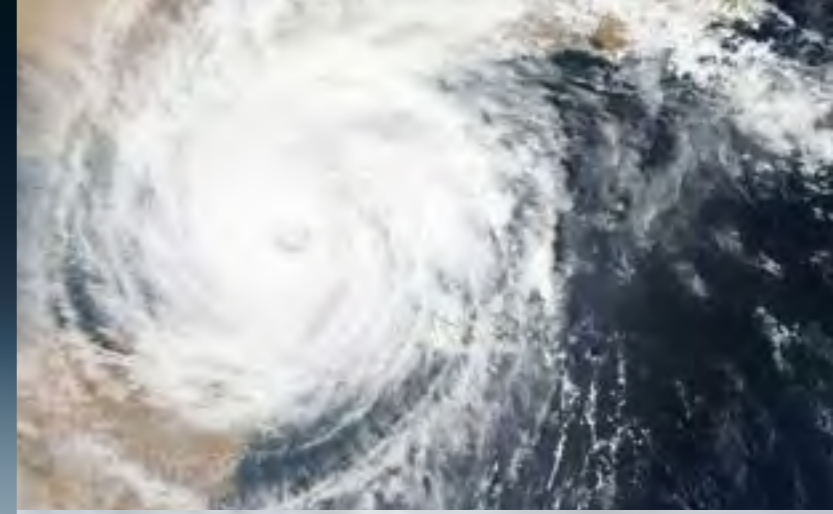
- Taking part in a group photo challenge of London landmarks on the study tour
- Writing and administering a class survey of hobbies and interests related to life in London and at home

Week includes:

Study Tour: London & Oxford

- London Eye
- London & Oxford walking tour
- Christ Church College
- Shopping time





WEEK 2:

Protecting the planet




SUNDAY 3 APRIL – SATURDAY 9 APRIL

What can we do today to reduce our impact on the environment tomorrow? Students will gain more insight into the importance of developing global solutions and addressing environmental issues.

Example learning outcomes

- ✓ Learn to use functional language for debate, discussions and giving presentations
- ✓ Employ critical-thinking and problem-solving skills to tackle real-world issues affecting the planet
- ✓ Develop presentation skills in order to be able to speak confidently in front of others

Topics may include:

-  Natural Sciences
-  Environmental Studies
-  Social & Cultural Studies

Types of activities could include:

- Discovery learning and practical tasks highlighting impact of human civilization on the environment and ways of reducing the negative effects
- Making posters and information leaflets
- 'Webquest' research activity into the effectiveness of different types of renewable energies

Week includes:

Study Tour:

London & Stratford-upon-Avon

- Natural History Museum
- Walking tours
- Shakespeare's birthplace
- Shopping time





WEEK 3:

Fantastic festivals

SUNDAY 10 APRIL – SATURDAY 16 APRIL




Explore and share different traditions from around the world and work together to plan your own unique festival.

This project will develop students' cross-cultural understanding by learning about different festivals and traditions from the UK as well as their home countries and around the world.

Example learning outcomes

- ✓ Learn relative clauses to describe a festival from the students' own countries to their classmates
- ✓ Use of functional phrases to suggest ideas and express opinions while discussing plans for a school festival
- ✓ Develop collaboration skills during lessons focused on planning for a school-wide event

Topics may include:

-  Media & Social Studies
-  Performing Arts
-  Geography

Types of activities could include:

- Work in pairs or small groups to design factsheets or posters on different festivals and traditions
- Complete a vocabulary and listening task using a popular music track

Week includes:

Study Tour:

London & Warwick

- British museum
- London walking tour
- Warwick castle
- Shopping time





WEEK 4: Fame and fortune

SUNDAY 17 APRIL – SATURDAY 23 APRIL

Do you think celebrities have an impact on issues such as equality, fairness and representation?

Explore the world of the rich and famous and its connection to global culture in this fascinating week.

Example learning outcomes

- ✔ Learn to make conditional sentences to talk about imaginary situations (B1-B2)
- ✔ Practise using functional phrases and key tactics for success in a debate
- ✔ Make critical analyses on a range of information from a range of media sources

Topics may include:

- 📖 Business Studies
- 📖 Media Studies
- 👥 Social and Cultural Studies

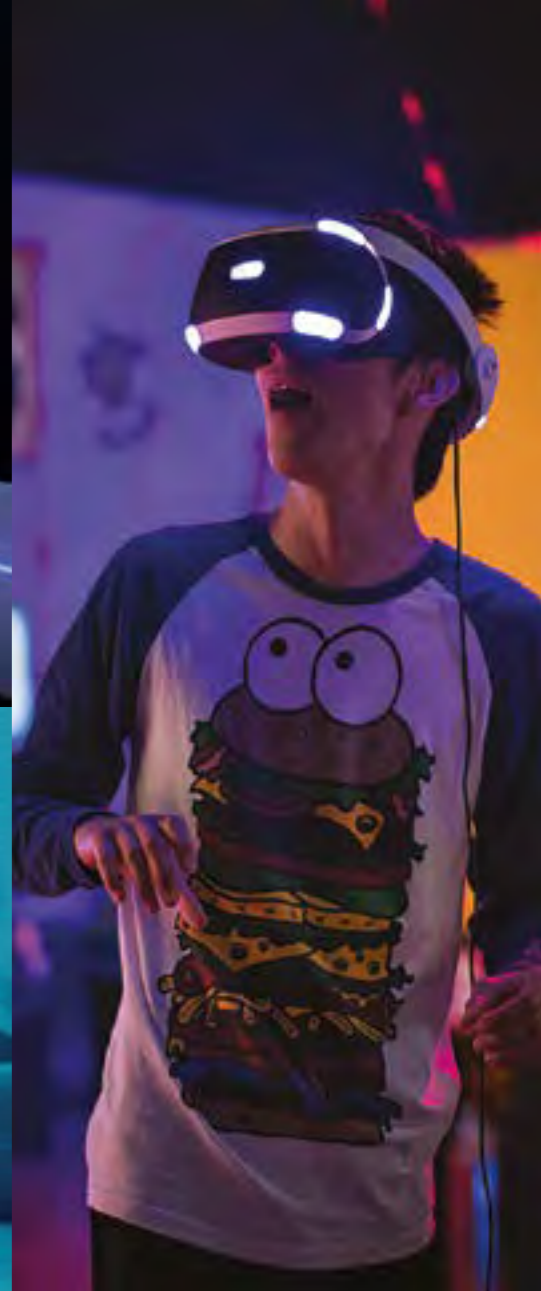
Types of activities could include:

- Design and present a new product along with a marketing strategy and advertisement
- Participate in a debate on the positive and negative influences of celebrity culture

Week includes:

Study Tour: London & Cambridge

- Madame Tussauds
- London & Cambridge walking tour
- Punting
- Shopping time



WEEK 5: Future fantastic

SUNDAY 24 APRIL – SATURDAY 30 APRIL




In this everchanging world, let's explore how advancements in technology have shaped the world around us and how this might change and develop into the future.

What kind of inventions and discoveries will there be? What skills do students need in the future?

Example learning outcomes

- ✓ Improve understanding and use of future constructions to make plans and predictions (B2)
- ✓ Learn to confidently use the present perfect to compare changes in photos (B1)
- ✓ Develop pronunciation whilst widening knowledge of cities in the UK

Topics may include:

-  Sciences
-  Design and Technology
-  Business Studies

Types of activities could include:

- Work in groups to create a map of a city of the future
- Design an invention or innovation and develop a business proposal

Week includes:

Study Tour: London

- Science Museum
- London walking tour
- Shopping time





Bell Berkshire College

Discover the English language through active, academic and creative activities in a beautifully historic school with extensive grounds.

Featuring modern classrooms, spacious common areas, a dining room and modern residential accommodation, this centre is ideal for providing a safe and peaceful environment for your child.

Sample educational activities

- | | |
|----------------------|--------------------|
| Art and crafts | Handball |
| British literature | Health and fitness |
| Cricket | Journalism |
| Dance | Music |
| Dodgeball | Orienteering |
| Drama | Rounders |
| Film and photography | Volleyball |
| Football | Board games |

Facilities

- Free wireless internet
- Dining room
- Disabled access/facilities
- Peaceful, countryside setting
- Large lecture theatre
- Indoor sports hall
- Extensive playing fields
- Dance studio
- 24/hr CCTV across the campus

Accommodation

- Twin, triple and multi-bed rooms available
- Separate accommodation blocks for boys and girls
- A dedicated houseparent in every boarding house

Travel

FREE transfers* on scheduled arrival and departure days from:

- London Heathrow **28 km**
- London Stansted **117 km**
- Ebbsfleet Eurostar **118 km**

* For flight arrival/departures between 10am and 6pm or specific trains. Custom transfers can be arranged – ask us for details.

Transfers

Free transfers will be available for arrivals and departures between 10am and 8pm, depending on student travel requirements.

Any students travelling as an Unaccompanied Minor are subject to an additional £50 fee (per single journey).

Important:

Arrival details for each student must be sent to Bell at least 10 working days before the start of course to guarantee an airport transfer. Please also notify us at least 7 working days if there are any changes to your departure date.

Bell Berkshire College

London Heathrow 28km
London Stansted 117km
Ebbsfleet Eurostar 118km

Bedrooms

All bedrooms contain bunk beds and can accommodate between two and five students. Every room also has a wardrobe, chest of drawers and chair. **Please note:** towels and hair dryers are not provided.

Bathrooms

Shared showers and toilet facilities are situated at convenient points throughout the accommodation.

Housekeeping

Bedrooms and bathrooms are cleaned regularly. Fresh bed linen is provided every week.

Meals

Full board (breakfast, lunch and dinner are served at the school and a packed lunch is provided on study tours). As well as a variety of global cuisines, students will experience traditional British meals such as roast dinners and fish and chips.

Laundry

Free laundry service for machine washable clothes once a week. Bell cannot take responsibility for any items lost or damaged during the laundry process.

Pocket Money

£100 per week (recommendation).

Electricity

220-240V, 50Hz AC. UK-type 3-pin plugs are used.

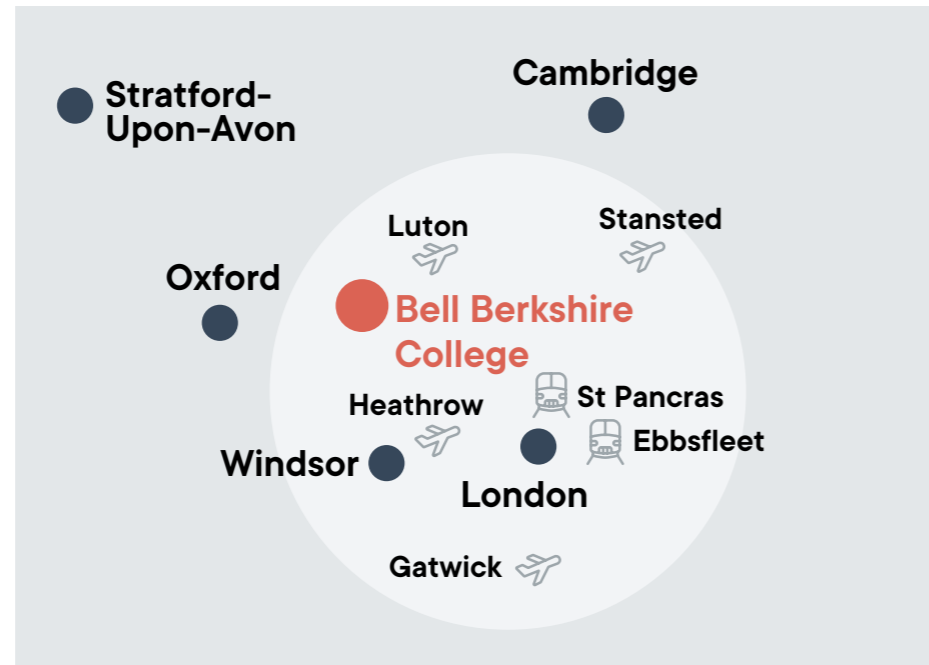
Curfew

Lights are switched off between 22:30 and 23:00. Students are not allowed outside the school site without supervision.

16 SPRING EXPLORER

BELL BERKSHIRE COLLEGE	10AM - 8PM	OUT-OF-HOURS
London Heathrow	Free	£70
London Stansted	Free	£140
Ebbsfleet Eurostar	Free*	£120

* based on advised train times



Supervision

- ✓ School team available 24 hours a day, all week
- ✓ Houseparents responsible for student welfare
- ✓ Houseparents available for support and advice at any time
- ✓ Staff:Student ratio is at least 1:6
- ✓ All onsite staff are police checked

Local Area Information

- ✓ Nearest town: Maidenhead is a 10-min drive with shopping centre and supermarket
- ✓ Nearest train station: Maidenhead
- ✓ Nearest airport: Heathrow is a 30-min drive
- ✓ Travel time to London: 30 mins by train and taxi, 60 mins by coach

