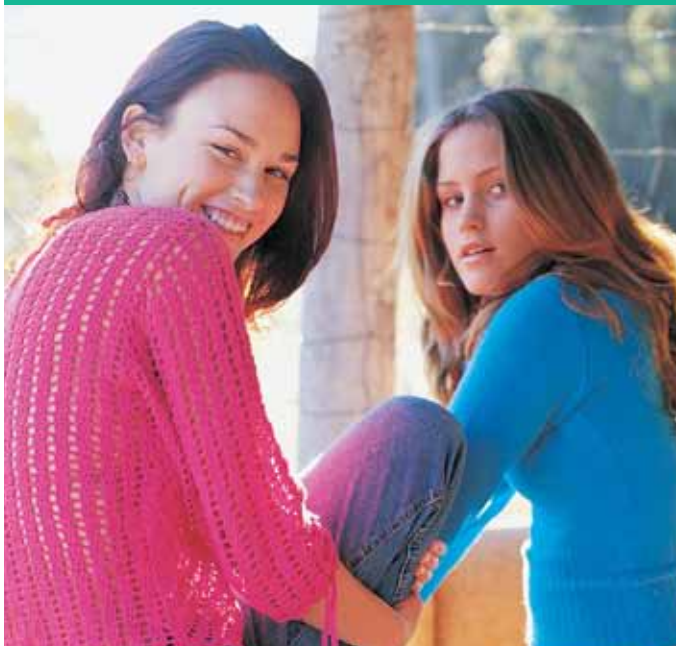
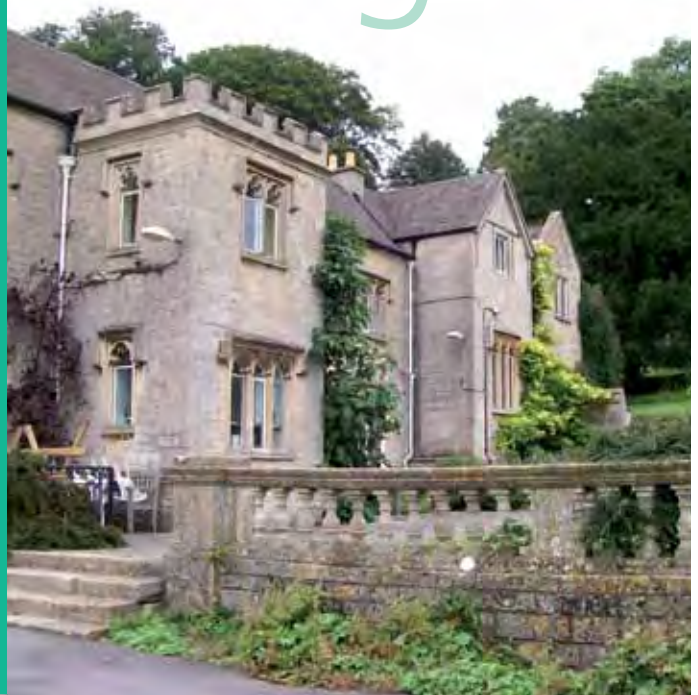


summer school prior park college

Designed in 1830 by the famous architect John Wood the Elder, this grand Palladian mansion was once the home of Ralph Allen, the entrepreneur who rebuilt Bath using the controversial Bath stone. The school sits upon picturesque landscaped grounds overlooking the famous World Heritage City of Bath with its renowned spa waters. The Roman style bridge, statues and ornate chapel only add to the historical ambience of this catholic college.



FACILITIES

- Wide open playing fields
- Tennis courts
- Cricket pitch
- A heated indoor swimming pool
- A sports hall
- An all weather astro turf pitch
- Ample common rooms
- Spacious theatre
- Comfortable classrooms



Rosetta Stone Programme

At this center we offer **2 FREE** lessons per week using Rosetta Stone an exciting interactive English language programme



THE LOCATION

Bath has a range of shops, restaurants and leisure facilities and provides very easy access to London by rail or bus, as well as the two major London airports – Gatwick is 2 hours and Heathrow is only 90 minutes away.

summer school



BATH HOMESTAY

Homestay students stay with English families in the local area. Many families are within 30 minutes walk of the centre. If not, we provide a FREE school bus pass or FREE taxi service to and from the centre. Families provide breakfast each day and all evening meals. Homestay provides students with the opportunity to experience the English way of life at first hand and to practice English outside the classroom - it is an enriching way to learn English.

AND MORE

In addition to attending 20 English language lessons per week, students at Prior Park College will have two lessons using Rosetta Stone, a state of the art interactive English language software programme which utilises voice recognition and corrects accents of all nationalities. Students can have additional time each week to use this programme, if they so wish.

Group Leaders will receive two free English lessons and a social evening with staff each week.

EXCURSIONS:

- London & British Museum
- Bath Abbey and Roman Baths
- Bristol Imaginarium
- Cheddar Gorge*
- Shakespeare's Birthplace & Stratford upon Avon
- Thermae Bath Spa*
- Oxford
- Stonehenge and Salisbury
- Longleat Animal Park
- Victoria Art Gallery, Bath
- Fashion museum, Bath
- Thorpe Park*

* Optional extra (see website for prices)

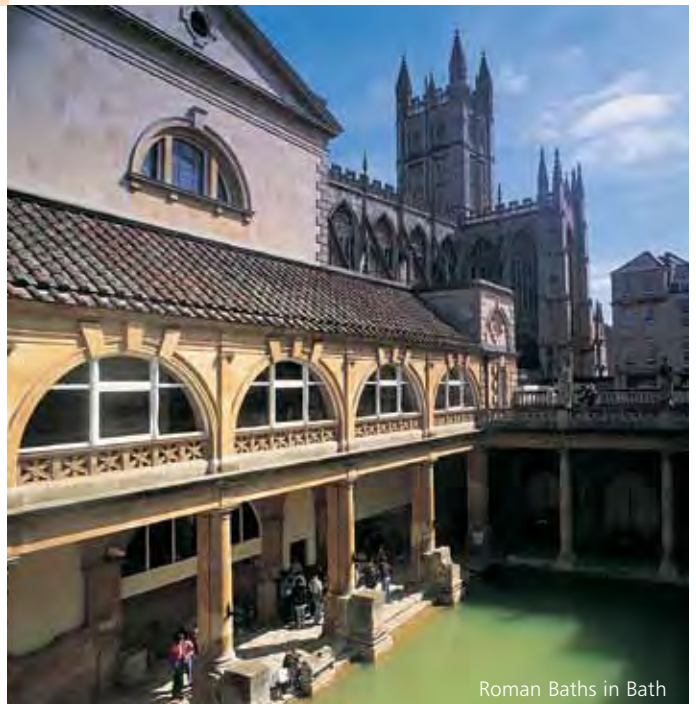
ACTIVITIES:

- Dance
- Arts and Crafts
- Football
- Badminton
- Volleyball
- Pottery/Ceramics
- Nature walks
- Drama
- Photography
- Tennis
- Shopping
- Fashion show
- Orienteering
- Jewellery making

FOOD

All meals are provided by the college in the artistic dining hall.

There is a wide variety on offer on the menu from traditional 'fish & chips' to pasta. The food is fresh and tasty and there is a wonderful salad bar too. We can cater for all dietary needs including vegetarian.



Roman Baths in Bath

ACCOMMODATION

A good standard of accommodation with separate houses for boys and girls. The rooms are mainly 2,3, 4 & 6 bedded rooms with some single rooms for older students and larger bedrooms for groups of friends. The boys' accommodation has been completely refurbished in the last two years. The girls' accommodation is very comfortable with three common rooms, a kitchen and a dining room.



CHURCHILL HOUSE

Churchill House, Spencer Square, Ramsgate,
Kent, England CT11 9EQ